

TRACTION MINDER™ ELEVATOR SYSTEM

PACKAGED SOLUTION TO ADDRESS ASME 17.1 REQUIREMENTS FOR TRACTION (ELECTRIC) ELEVATORS

Traction Minder creates newfound ease when ensuring the right components are specified to meet application and code requirements for traction elevators. A robust portfolio of packaged solutions also accounts for the growing demand to implement BACnet into BAS/BMS systems—conveniently offered with other system components in a single part number. Selections can now be completed with an increased level of confidence that field-proven components, from a single, trusted source, will create the right balance between functionality and cost in a life/safety application.

A list of Traction Minder part numbers, included on the back page, provide the pump, control panel and floats to meet 50, 100 and 150 GPM (as specified by ASME 17.1) at the specified distance (feet). This package approach—which was inspired by the industry's acceptance of Oil Minder® in hydraulic elevators—maximizes operational efficiencies from specification to installation. Designing a plug-and-play, application-specific answer to pumps and associated equipment in traction elevators has led to the following features:

- SE/SV series pumps, featuring a vortex impeller design, have become the standard for elevators
- NEMA 4X control panel with HOA switch, pump run light and a dry contact (high water) for connectivity
- Three floats (on, off and high water) are pre-assembled at the factory to minimize labor
- Ability to further customize with control panel features, main disconnect and/or junction box with 8-pin connector



TECHNICAL DATA

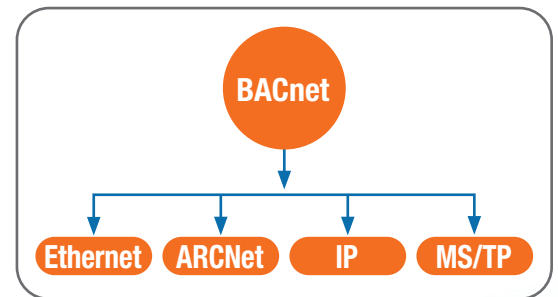
TRACTION MINDER™ SYSTEM COMPONENTS				TECHNICAL DATA											
Traction Minder PN	Pump	Control	Floats (3)	HP	Voltage	Phase	Rated Full-load Amps	RPM	Discharge (inches)	Head (ft.) @ 50 GPM	Head (ft.) @ 100 GPM	Head (ft.) @ 150 GPM	Weight (lbs.)	Height (inches)	Width (inches)
WSE40/115/1	SE-40/115/1	CB-1000/120/1/15/2	741-009-1-XXX	0.4	115	1	5.2	3,450	2"	11"			24	15.59"	9.09"
WSE50/115/1	SE-50/115/1	CB-1000/120/1/15/2	741-009-1-XXX	0.5	115	1	8.0	3,450	2"	22'			29	16.57"	9.09"
WSE50/208/3	SE-50/208/3	CB-2000/208/3/2.5-4/5	741-009-1-XXX	0.5	208	3	3.1	3,450	2"	22'			29	16.57"	9.09"
WSE50/230/3	SE-50/230/3	CB-2000/230/3/2.5-4/7.5	741-009-1-XXX	0.5	230	3	2.8	3,450	2"	22'			29	16.57"	9.09"
WSE50/460/3	SE-50/460/3	CB-2000/480/3/1.6-2.5/15	741-009-1-XXX	0.5	460	3	1.4	3,450	2"	22'			29	16.57"	9.09"
WSE100/115/1	SE-100/115/1	CB-1000/120/1/15/2	741-009-1-XXX	1.0	115	1	12.0	3,450	2"	35'	9'		40	19.53"	9.09"
WSE100/208/3	SE-100/208/3	CB-2000/208/3/4-6.3/5	741-009-1-XXX	1.0	208	3	4.4	3,450	2"	36'	14'		40	19.53"	9.09"
WSE100/230/3	SE-100/230/3	CB-2000/230/3/4-6.3/7.5	741-009-1-XXX	1.0	230	3	4.0	3,450	2"	36'	14'		40	19.53"	9.09"
WSE100/460/3	SE-100/460/3	CB-2000/480/3/1.6-2.5/15	741-009-1-XXX	1.0	460	3	2.0	3,450	2"	36'	14'		40	19.53"	9.09"
WSV200/208/1	SV-200/208/1	CB-1000/208/1/15/2	741-009-1-XXX	2.0	208	1	12.2	3,450	2"/3"	52'	35'	14'	77	20.94"	15.35"
WSV200/230/1	SV-200/230/1	CB-1000/230/1/15/3	741-009-1-XXX	2.0	230	1	11.0	3,450	2"/3"	52'	35'	14'	77	20.94"	15.35"
WSV200/208/3	SV-200/208/3	CB-2000/208/3/6.3-10/5	741-009-1-XXX	2.0	208	3	6.9	3,450	2"/3"	52'	35'	14'	77	20.94"	15.35"
WSV200/230/3	SV-200/230/3	CB-2000/230/3/4-6.3/7.5	741-009-1-XXX	2.0	230	3	6.2	3,450	2"/3"	52'	35'	14'	77	20.94"	15.35"
WSV200/460/3	SV-200/460/3	CB-2000/480/3/2.5-4/15	741-009-1-XXX	2.0	460	3	3.1	3,450	2"/3"	52'	35'	14'	77	20.94"	15.35"
WSV300/208/3	SV-300/208/3	CB-2000/208/3/6.3-10/5	741-009-1-XXX	3.0	208	3	8.8	3,450	2"/3"	64'	47'	26'	79	21.73"	15.35"
WSV300/230/3	SV-300/230/3	CB-2000/230/3/6.3-10/7.5	741-009-1-XXX	3.0	230	3	8.0	3,450	2"/3"	64'	47'	26'	79	21.73"	15.35"
WSV300/460/3	SV-300/460/3	CB-2000/480/3/4-6.3/15	741-009-1-XXX	3.0	460	3	4.0	3,450	2"/3"	64'	47'	26'	79	21.73"	15.35"
WSV500/208/3	SV-500/208/3	CB-2000/480/3/14-20/15	741-009-1-XXX	5.0	208	3	16.6	3,450	3"/4"	74'	61'	48'	123	24.92"	18.50"
WSV500/230/3	SV-500/230/3	CB-2000/230/3/11-16/7.5	741-009-1-XXX	5.0	230	3	15.0	3,450	3"/4"	74'	61'	48'	123	24.92"	18.50"
WSV500/460/3	SV-500/460/3	CB-2000/480/3/9-13/15	741-009-1-XXX	5.0	460	3	7.5	3,450	3"/4"	74'	61'	48'	123	24.92"	18.50"

A "BAC" suffix is added to the end of the PN to indicate BACnet capability.

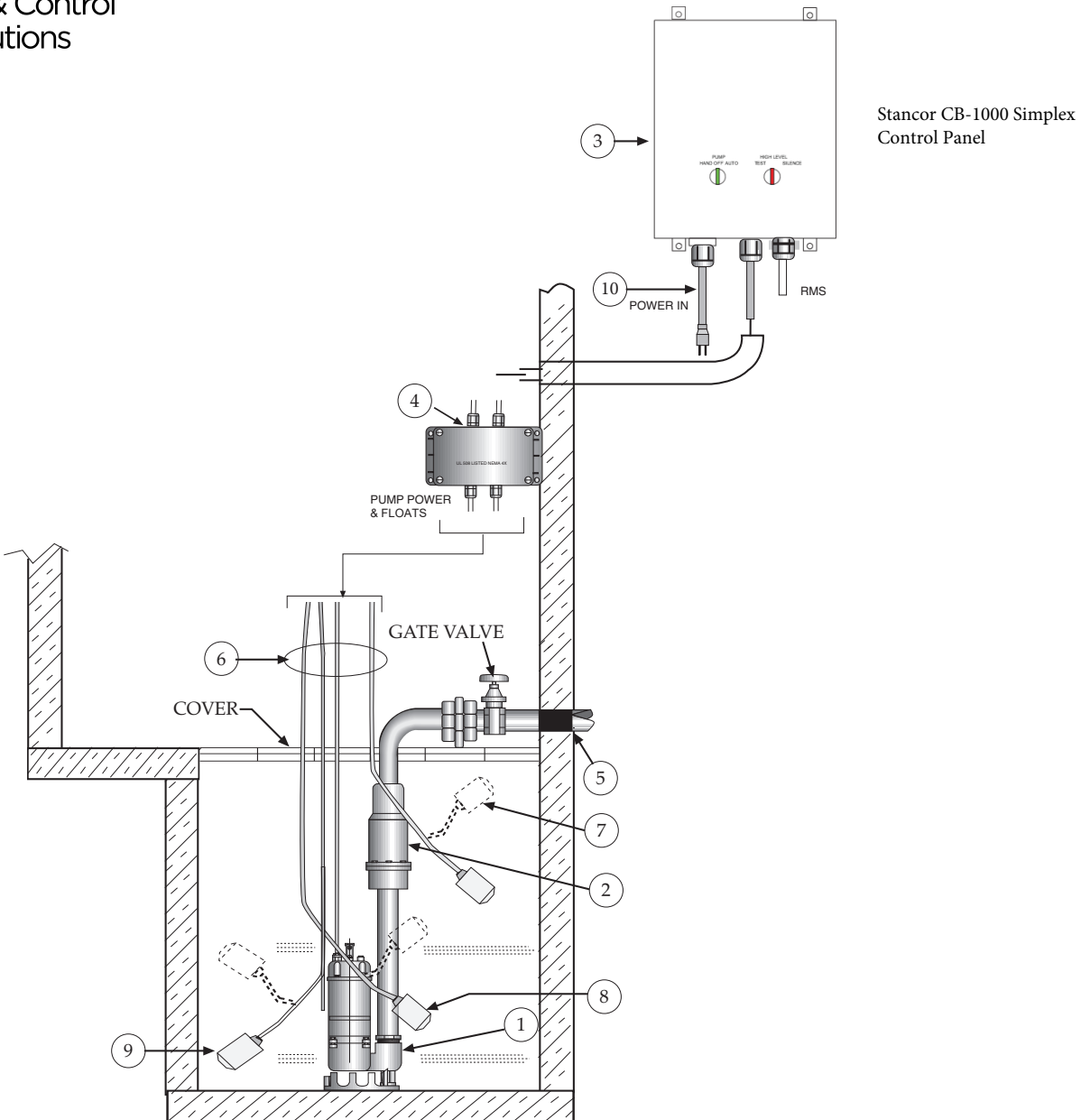
BACnet INTEGRATION

BACnet functionality is available on all Traction Minder models to combine plumbing and HVAC equipment into the same channel for alarms, fault codes and operating schedules. The integrated hardware/software implementation allows the control panel to communicate with any protocol, with IP and MS/TP being the most popular. The following messaging is offered with the standard BACnet package:

- Oil fault
- High water alarm
- Pump run status



Typical Traction Minder™ System



1. Stancor[®] Model SE-50 submersible effluent pump .5 HP, 115 volt, 3600 RPM, 2" discharge connection
2. Check valve (2") By others.
3. Stancor[®] Traction Minder™ system, 115V, 1Ø control system with built-in audible and visual alarm when pump does not run due to high liquid or high amperage condition. Provide silencing button for audible alarm built into panel. Panel shall have one contact for a remote alarm location (high water or amperage alert).
4. Junction box (Optional)
5. All buried pump pressure discharge piping shall be protected with tapecoat CT corrosion protection tape
6. Pump cable and pump "on / off and high liquid alarm" float cables (16 ft. lengths)
7. 'High liquid alarm' float with clamp device to mount to pump discharge piping
8. Pump 'ON' float
9. Pump 'OFF' Float
10. Power cord and molded ground plug (6 ft. length)

ITEMS 1, 2, 3, 4, 6, 7, 8, 9, and 10 PROVIDED BY STANCOR[®] AS A STANDARD PACKAGE



TECHNICAL DATA

AVENGER SERIES

SEW-150

STANCOR

Dwg: DS-A02-019 Rev: 2 Date: 01/16

MOTOR SPECIFICATIONS

Motor Design	NEMA design B, squirrel cage induction
Motor Type	Enclosed submersible
Insulation Class	Class E
Motor Protection	Bi-metallic Thermal Switch
Bi-Metallic Temp Trip	120° C ± 5° C
Service Factor	1.3
Voltage Tolerance	± 10% from nominal



MOTOR DATA, 60Hz

Model	Phase	Output Power BHP	Volts	Full Load Amps	Locked Rotor Amps	NEMA Code Letter	Power Factor 100% Load	Motor Efficiency 100% Load	Pole/Speed (rpm)
SEW-150	1	1.5	115	17.6	88.0	H	0.95	0.69	2/3450
	1	1.5	208	9.7	48.5	J	0.93	0.69	2/3450
	3	1.5	230	5.5	27.5	J	0.93	0.75	2/3450
	3	1.5	460	2.8	14.0	J	0.91	0.75	2/3450
	3	1.5	575	2.5	12.5	K	0.90	0.75	2/3450

MATERIALS OF CONSTRUCTION

Upper Motor Lid	Cast Iron ASTM A48 Class 30
Motor Housing	AISI 304 Stainless Steel
Oil Chamber	Cast Iron ASTM A48 Class 30
Volute	Cast Iron ASTM A48 Class 30
External Hardware	AISI 304 Stainless Steel
O-Rings	NBR
Motor Shaft	AISI 410 Stainless Steel
Upper Bearing	Single row Sealed
Lower Bearing(s)	Single row Sealed
Upper Shaft Seal	Carbon/Ceramic
Lower Shaft Seal	SiC/SiC
Impeller	Cast Iron ASTM A48 Class 30

DIMENSIONS, WEIGHT, AND MISC.

Pump weight single phase	55lbs (25kg)
Pump weight three phase	55lbs (25kg)
Maximum submergence	33 feet (10m)
Discharge size, standard	2" NPT female vertical
Maximum temp. of pumped fluid	104°F (40°C)

CABLE SPECIFICATIONS

MODEL	PHASE/VOLTAGE	POWER CABLE	LENGTH	OUTER JACKET
SEW-150	1Ø-115V	SJTOW 12/3	33feet (10m)	NBR
	1Ø-230V	SJTOW 14/3	33feet (10m)	NBR
	3Ø-230V	STOW 16/4	33feet (10m)	NBR
	3Ø-460V	STOW 16/4	33feet (10m)	NBR
	3Ø-575V	STOW 16/4	33feet (10m)	NBR

Power cable suitable for all standard voltages listed in "MOTOR DATA" section.



Arturo Garcia
 102 NE 2nd Street, Suite 510
 Boca Raton FL 33432
 (954) 483 9269
 arturo@wvs-llc.com

Specifications subject to change without notice

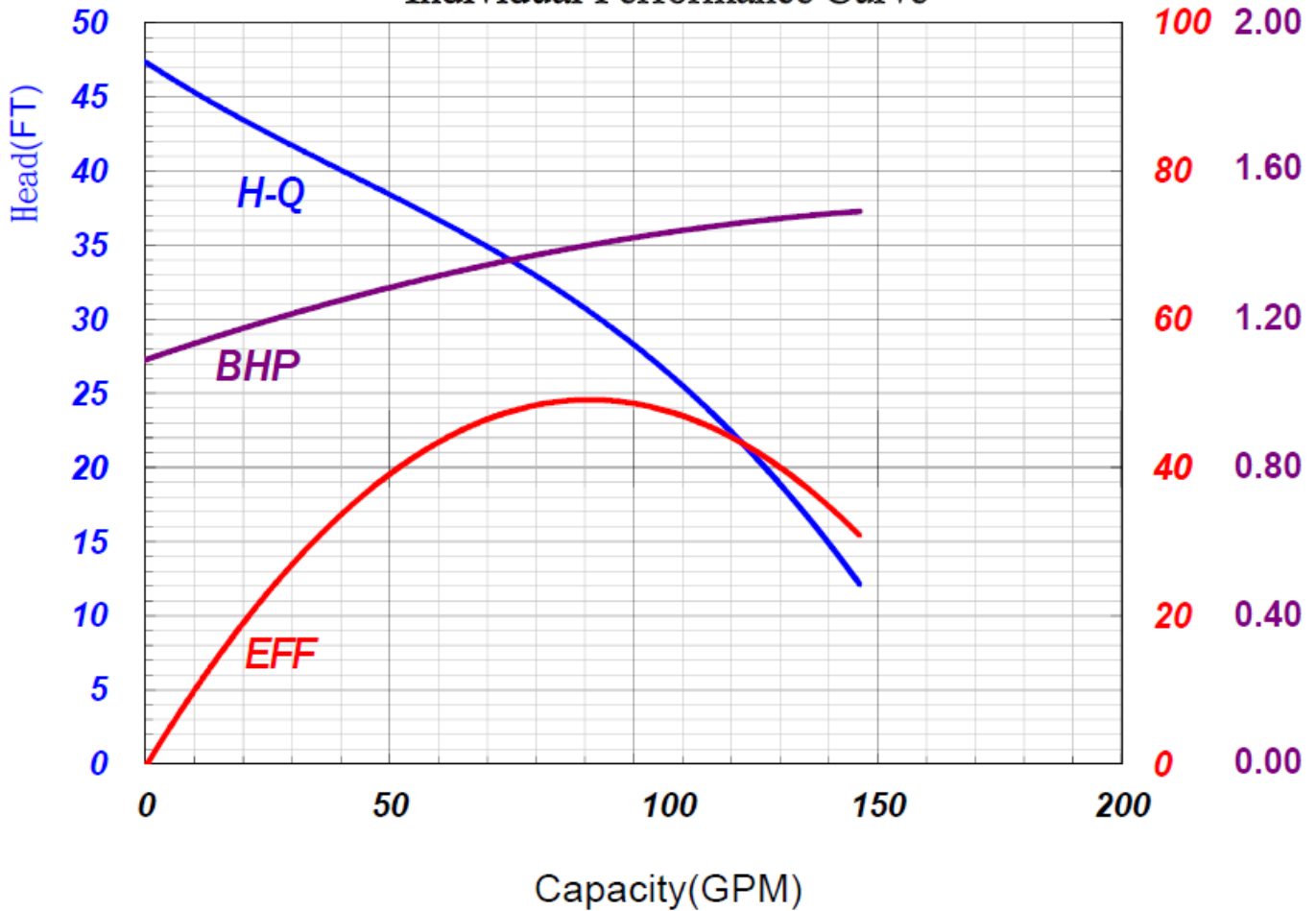


Horsepower: 1.5 HP

Hertz: 60 Hz

Stancor Model SEW-150 Individual Performance Curve

EFF (%) BHP



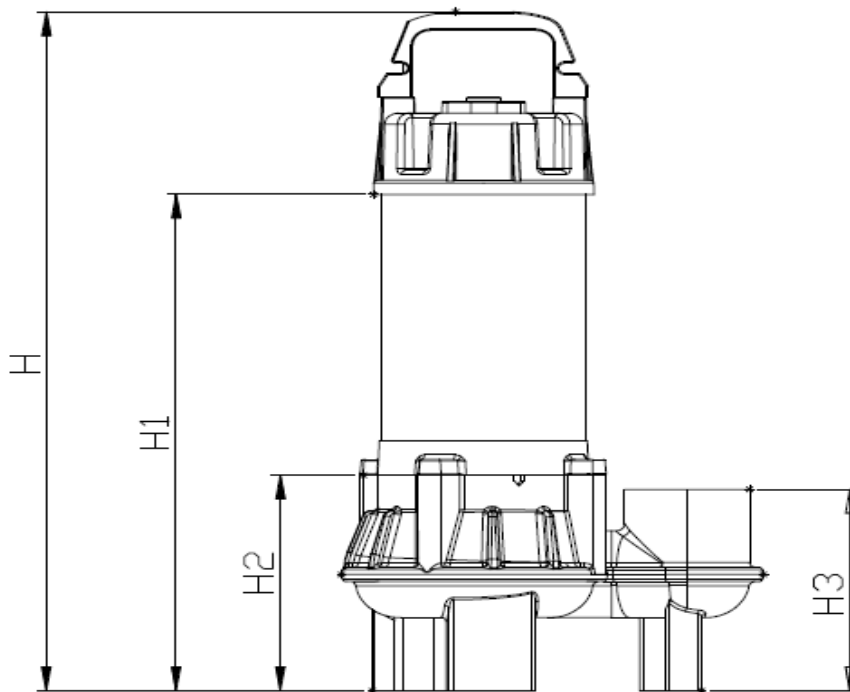
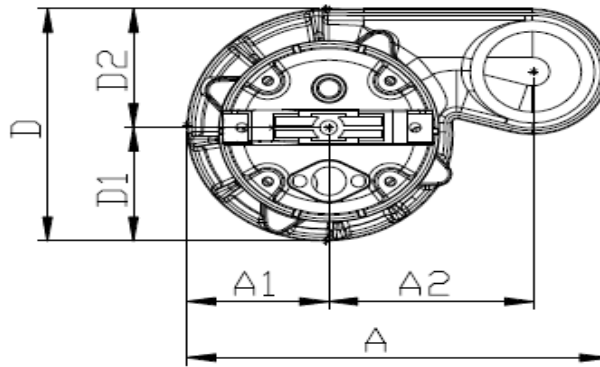
WASTEWATER SOLUTIONS LLC

Arturo Garcia
102 NE 2nd Street, Suite 510
Boca Raton FL 33432
(954) 483 9269
arturo@wvs-llc.com

Specifications subject to change without notice



SEW-150



TYPE	DISCHARGE	A	A1	A2	D	D1	D2	H	H1	H2	H3
SEW-150	2" NPT female	10.67	3.66	5.31	7.32	3.46	3.86	19.92	14.80	5.94	5.63



WASTEWATER SOLUTIONS LLC

Arturo Garcia
102 NE 2nd Street, Suite 510
Boca Raton FL 33432
(954) 483 9269
arturo@wvs-llc.com

Specifications subject to change without notice

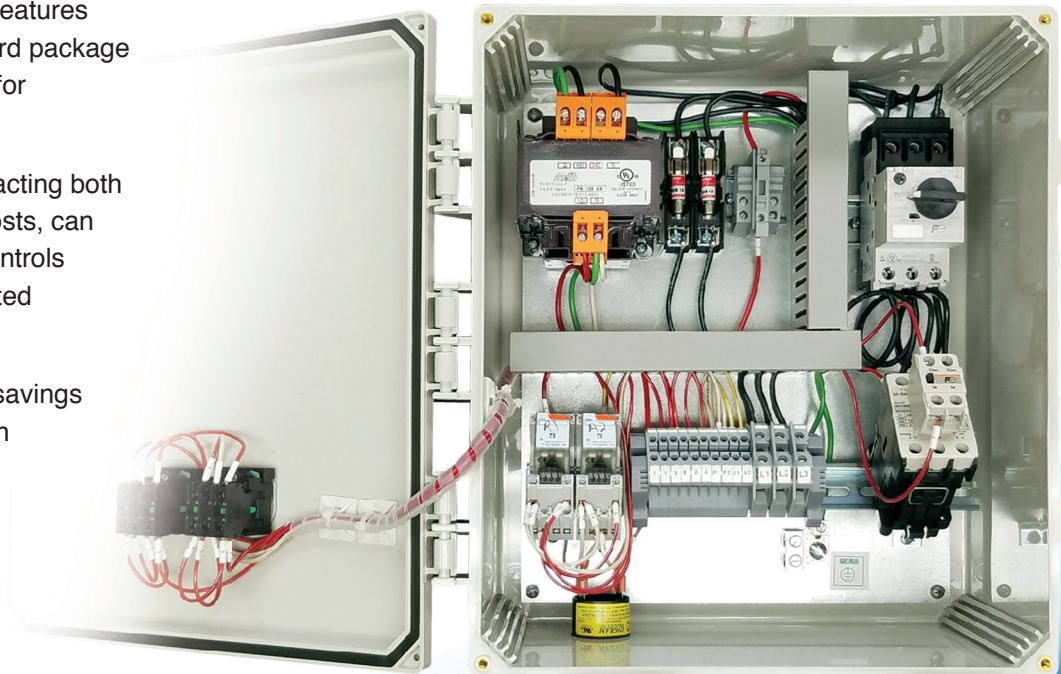
3-PHASE SIMPLEX CONTROL PANEL

INCORPORATING AUTOMATION TO IMPROVE RELIABILITY AND SYSTEM EFFICIENCIES

The CB2000 is a standard 3-phase Simplex pump control that provides the base for additional customization. Simplex controls provide dependable, automatic operation of a single pump. Optional features can be added to the standard package to create a unique solution for individual needs.

Newfound efficiencies, impacting both energy consumption and costs, can result from implementing controls to achieve benefits associated with automation.

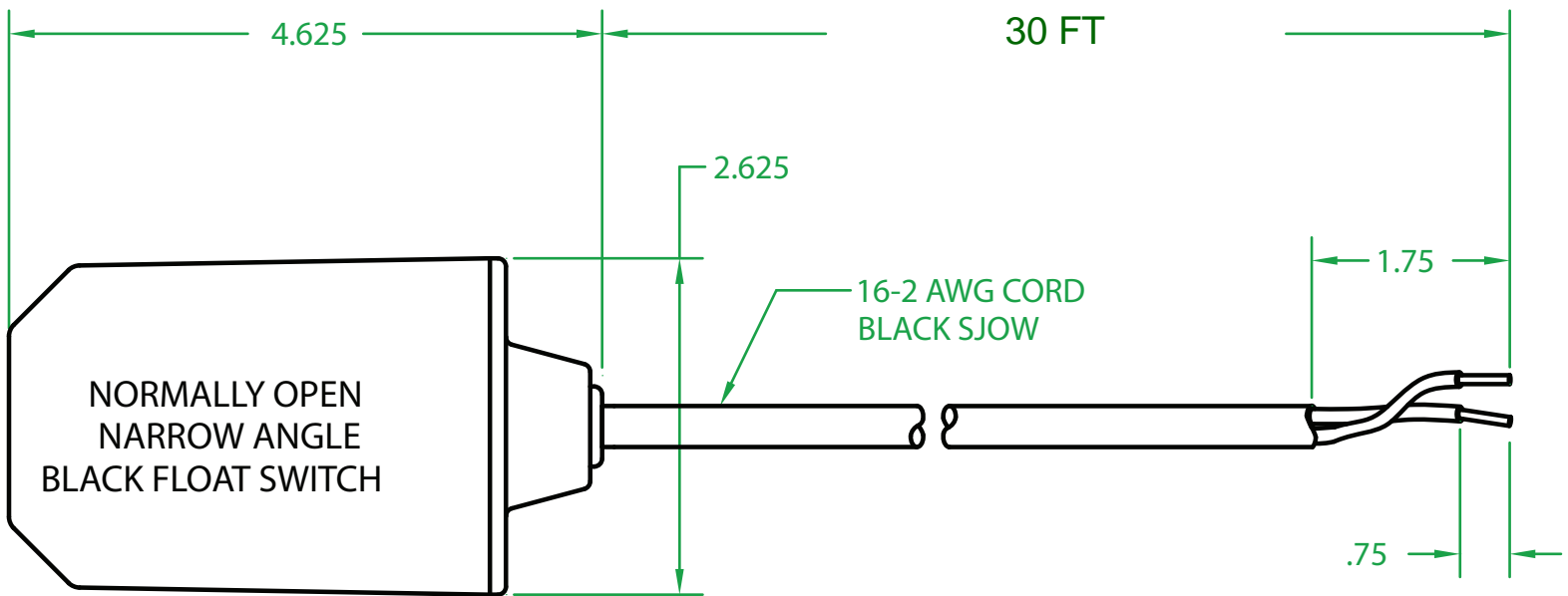
Stancor helps you capture savings by providing the best of both worlds—large enough to leverage global experience and small enough to offer local service and support.



STANCOR™

Pump & Control Solutions

BUILDING TRADES | CONSTRUCTION | MINING | UTILITIES | WASTEWATER



OPERATING ANGLE: TETHERLESS/INTERNALLY WEIGHTED
 CONTACTS CLOSE @ 25° ABOVE HORIZONTAL.
 CONTACTS OPEN @ 10° BELOW HORIZONTAL.

SWITCHING DIFFERENTIAL: 3.50"

ELECTRICAL RATINGS: 1/4 H.P. 10 AMPS @ 120/240 VAC. 34.8 LRA

FLOAT MATERIAL: A.B.S.