

**TECHNICAL DATA****AVENGER SERIES****SG-200**

STANCOR

Dwg: DS-A10-005 Rev: 1 Date: 05/15

MOTOR SPECIFICATIONS

Motor Design	Induction
Motor Type	Enclosed submersible
Insulation Class	Class F
Motor Protection	Bi-metallic Thermal Switch
Bi-Metallic Temp Trip	120° C ± 5° C
Service Factor	1.3
Voltage Tolerance	± 10% from nominal

**MOTOR DATA, 60Hz**

Model	Phase	Output Power BHP	Volts	Full Load Amps	Locked Rotor Amps	NEMA Code Letter	Power Factor 100% Load	Motor Efficiency 100% Load	Pole/Speed (rpm)
SG-200	1	2.0	230	16.0	80.0	L	0.85	0.80	2/3450
	3	2.0	230	8.5	43.0	K	0.85	0.80	2/3450
	3	2.0	460	5.0	25.0	L	0.85	0.80	2/3450
	3	2.0	575	3.4	17.0	K	0.85	0.80	2/3450

MATERIALS OF CONSTRUCTION

Upper Motor Lid	FC-20 Cast Iron
Motor Housing	FC-20 Cast Iron
Volute	FC-20 Cast Iron
External Hardware	AISI 304 Stainless Steel
O-Rings	NBR
Motor Shaft	Stainless Steel-410
Upper Bearing	Double row sealed
Lower Bearing(s)	Double row sealed
Shaft Seal	SiC/SiC/NBR
Impeller	FC-20 Cast Iron

DIMENSIONS, WEIGHT, AND MISC.

Pump weight single phase	77lbs (35kg)
Pump weight three phase	77lbs (35kg)
Maximum submergence	33 feet (10m)
Discharge size, standard	1.25 inch NPT female vertical
Maximum temp. of pumped fluid	104°F (40°C)

CABLE SPECIFICATIONS

MODEL	PHASE/VOLTAGE	POWER CABLE	LENGTH	OUTER JACKET
SG-200	1Ø-230V	SJTW 14/3	33feet (10m)	NBR
	3Ø-230V	STW 14/4	33feet (10m)	NBR
	3Ø-460V	STW 16/4	33feet (10m)	NBR
	3Ø-575V	STW 16/4	33feet (10m)	NBR

Power cable suitable for all standard voltages listed in "MOTOR DATA" section.



Specifications subject to change without notice

Stancor, Inc. 515 Fan Hill Road, Monroe, CT 06468

Tel: 203-268-7513

Fax : 203-268-7958

www.stancorpumps.com



SG-200

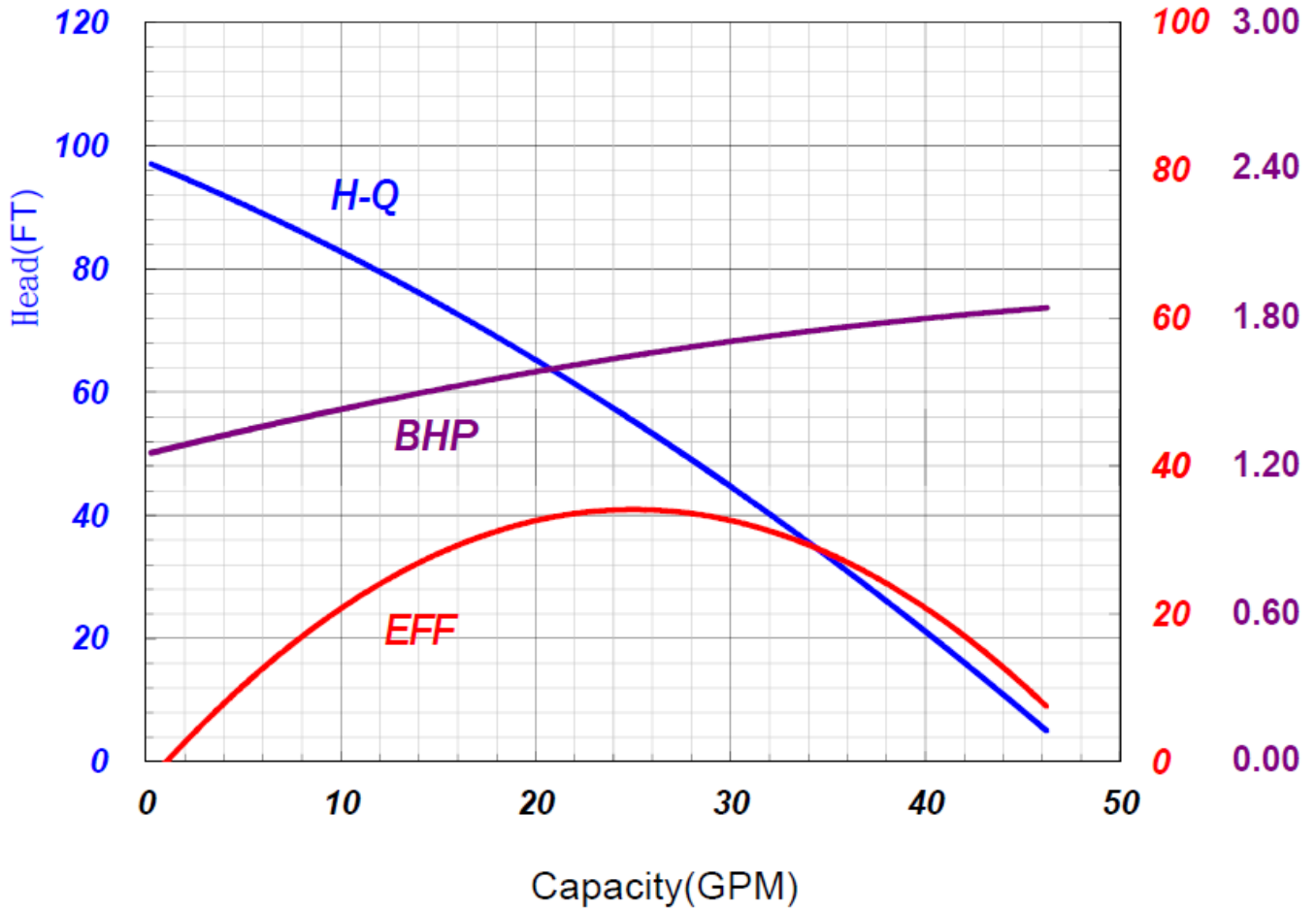


Horsepower: 2 HP

Hertz: 60 Hz

Stancor Model SG-200 Individual Performance Curve

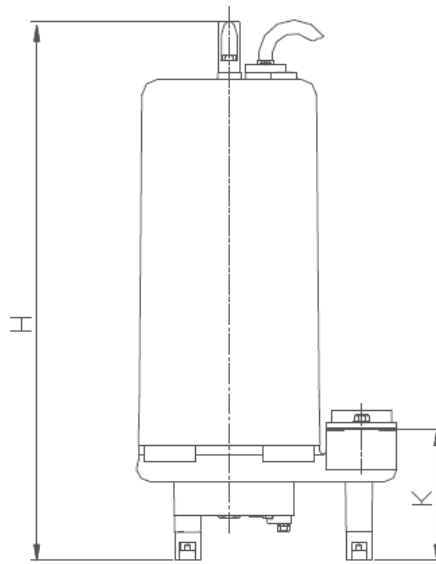
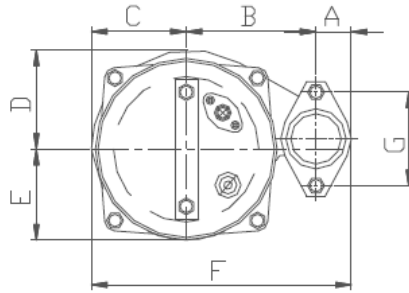
EFF (%) BHP



Specifications subject to change without notice



SG-200



Type	Discharge	A	B	C	D	E	F	G	H	K
Dimensions	1.25" NPT Female	1.34"	5.02"	3.60"	3.78"	3.62"	9.96"	3.54"	18.90"	4.96"

Specifications subject to change without notice