



INDUSTRIAL
FLOW
SOLUTIONS

DIRECT IN-LINE PUMP SYSTEM

Modular concept in
all stainless steel

Immersible
IP67 IE3 motors

Sectioning valve
for easy maintenance

Modulated pumping
driven by variable
speed drives for
energy saving

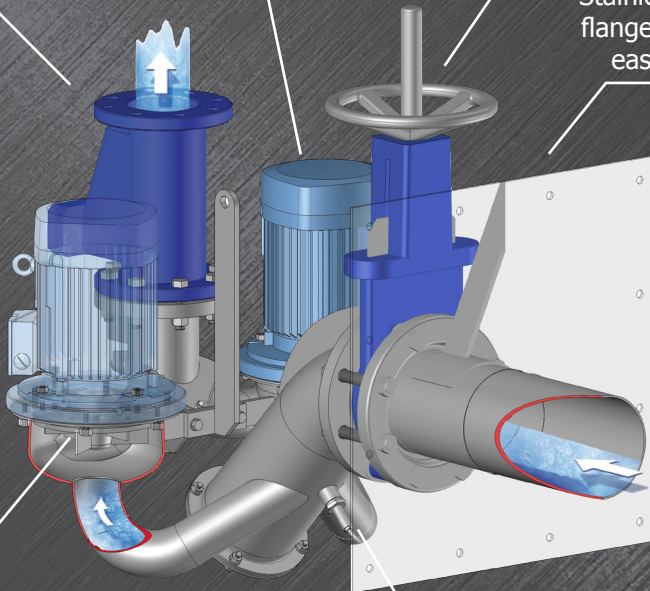
Stainless steel wall
flange supplied for
easy installation

Optional impeller
for self-cleaning
operation

Sensor for remote
management

Provides clean and safe
working environment

Stainless steel
Level Sensor



**WASTEWATER
SOLUTIONS LLC**

Arturo Garcia
102 NE 2nd Street, Suite 510
Boca Raton FL 33432
(954) 483 9269
arturo@wws-llc.com



The PUMP SYSTEM tailored to your need

AN INNOVATIVE PRINCIPLE :

By pumping gravity fed effluent directly from the point of entry, without water loading or a wet well, the Direct In-Line Pump System overcomes the drawbacks of retaining raw sewage:

- No dangerous gases (H₂S),
- No smells,
- No sand and grease accumulation,
- No equipment corrosion,
- No structural erosion,
- No obstructed float switches,
- Always have access safety.



The only patented system to lift effluent directly at the point of entry

The Direct In-Line Pump System provides innovative, durable and economical pumping stations.

A COMPLETE CONCEPT :

VFD

The Direct In-Line Pump System is driven, as standard, by variable speed drives. Operation is no longer based on "all-or-nothing" pumping but on continuous modulated pumping directly from the effluent inlet.



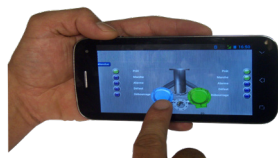
IMPELLER

The patented impeller that becomes a « Shredder » when it automatically changes direction of rotation. Coupled to variable frequency drive, this impeller changes its direction of rotation when needed in order to cut snarled long fibrous materials and rags, and then remove them.



SCADA System

The SCADA system offers remote control management, based on M2M communication, dedicated for the pump system. It allows many advanced remote functions such as resetting, remote unclogging and communication via secured Internet interface or/and standards SCADA controllers.



Your next lift stations can look like this : New or Rehab



ADVANTAGES OF DIRECT IN-LINE PUMPING

DIRECT ADVANTAGES OF DIRECT IN-LINE PUMPING :

- No wet well,
- No cleaning,
- No Dangerous gases (H₂S),
- No smells,
- No obstructed Float Switches,
- No corrosion,
- Access Safety,
- A direct in-line pump system pays for itself through reduced costs of operation.



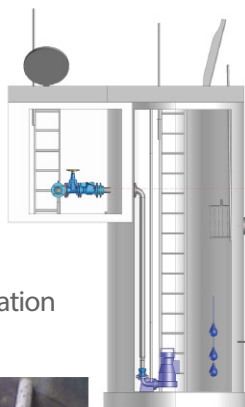
A FEW FIGURES ABOUT THE DIRECT IN-LINE PUMPING :

1500 units operating in different countries and savings every day since 2003.

56 models from 20gpm to 10 000gpm, up to 300ft head.

Up to 200HP

COMPARISON WITH A TRADITIONAL SYSTEM :



Traditional installation
with wet well



Installation with
Direct In-Line Pump System

