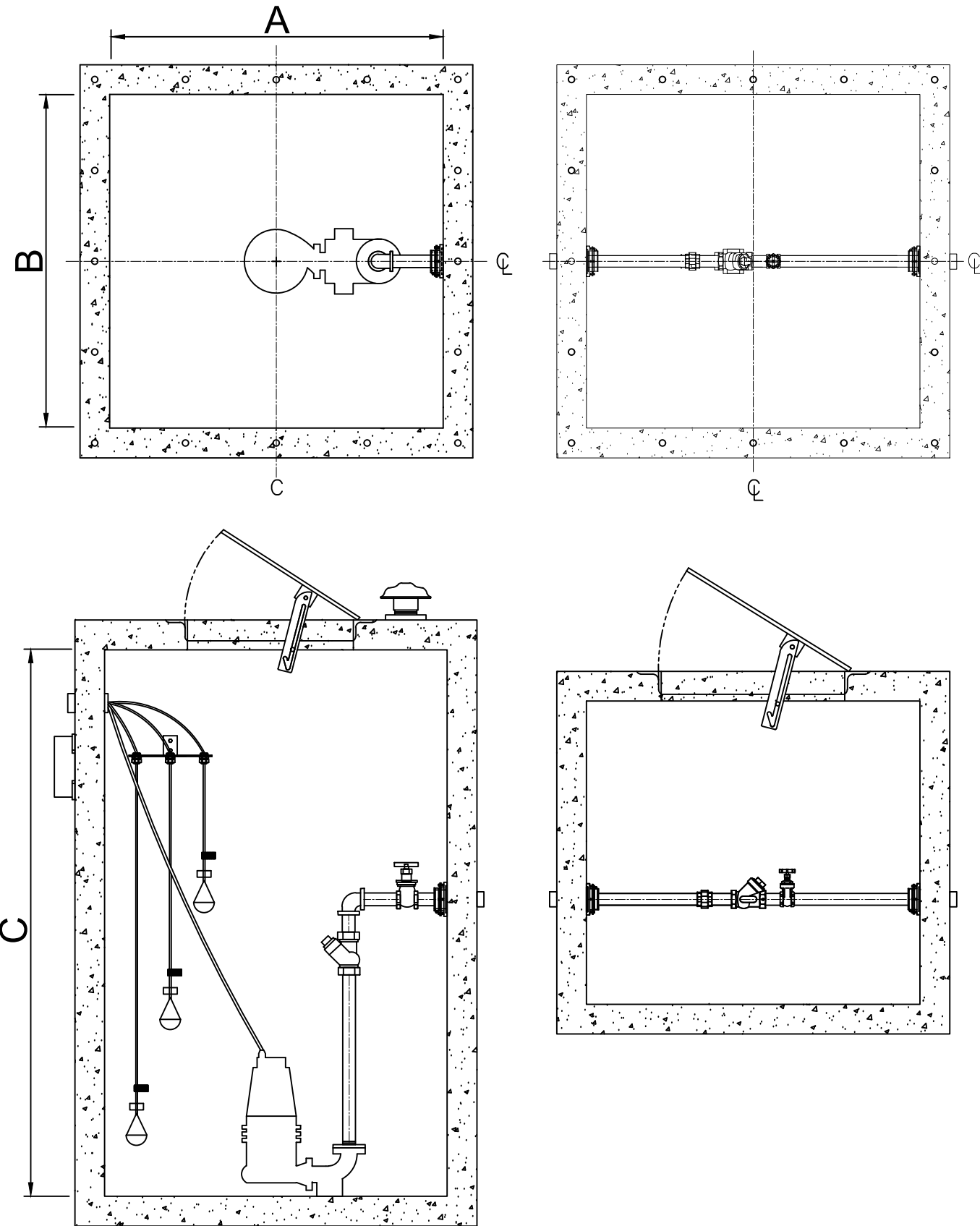
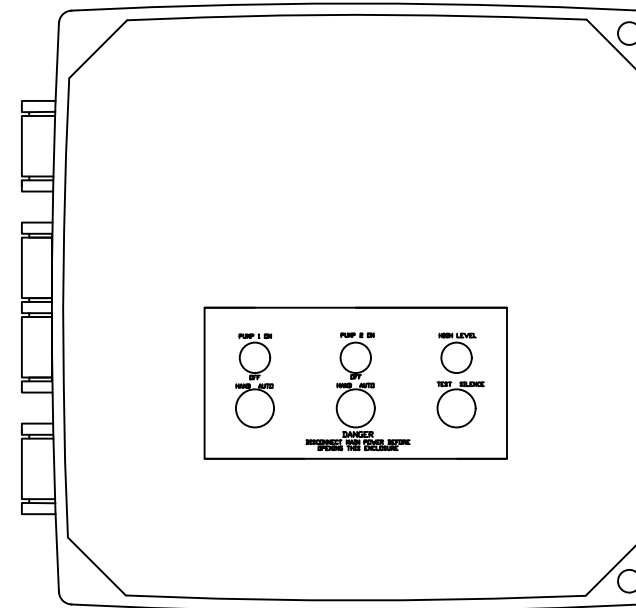


## BASIN DETAILS



## CONTROL PANEL



- Standard components:
- 1- 16 x 14 x 7 NEMA 4X polycarbonat enclosure.
  - 2- IEC motor contactor.
  - 3- MCC B for short circuit.
  - 4- Alternator.
  - 5- Green Pump run indicator lights.
  - 6- Alarm/Control CB.
  - 7- Float switch terminal block angled for ease of field installation.
  - 8- Input power terminal block angled for ease of field installation.
  - 9- Ground lugs.
  - 10- HOA(Hand/Off/Auto) switches.

- Standard Alarm Package:
- 11- High alarm relay for dry contacts.
  - 12- Indicator light for visual check.
  - 13- Sonalert audible alarm.
  - 14- Exterior alarm test with silence.
  - 15- Horn silence relay.

## GENERAL NOTES

|                  |  |
|------------------|--|
| BASIN LENGHT (A) |  |
| BASIN WIDTH (B)  |  |
| BASIN DEPTH (C)  |  |
| PHASE            |  |
| VOLTAGE          |  |
| PUMP             |  |
| FLOW (GPM)       |  |
| TDH (FEET)       |  |
| HP               |  |
| RPM              |  |
| DISCHARGE        |  |
| VALVE BOX DIM.   |  |

### NOTES:

PLEASE CONTACT  
**WASTEWATER SOLUTIONS LLC**  
**ARTURO GARCIA**  
 (954)-483-9269  
 Email: Arturo@WWS-LLC.com

**SIMPLEX EJECTOR SYSTEM  
 WITH VALVEBOX  
 HARD PIPED STATIONS  
 SQUARE CONCRETE BASIN**

### Revision notes:

| Rev: | Date: | Notes:  |
|------|-------|---------|
| A    |       | PROYECT |

Drawn by:  
A. GONZALEZ

Client:

Project:

Drawing Title:  
EJECTOR SYSTEM

Date:

Scale @ A3:

Revision:  
A

